

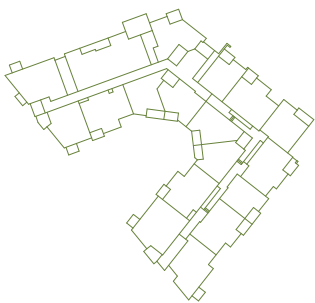
# KING + CRESCENT

# B

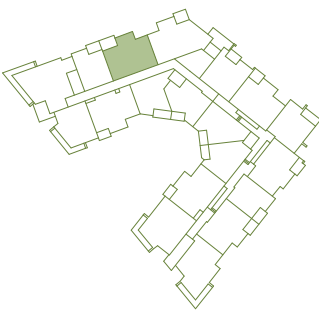
2 BEDROOM, 2 BATH  
Approx. 877 Sq Ft



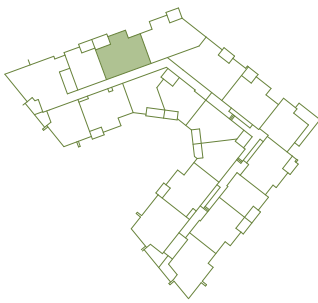
UNITS:  
218, 318, 418, 518, 618



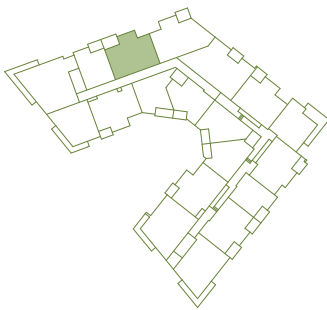
LEVEL 1



LEVEL 2



LEVEL 3 / 4 / 5



LEVEL 6

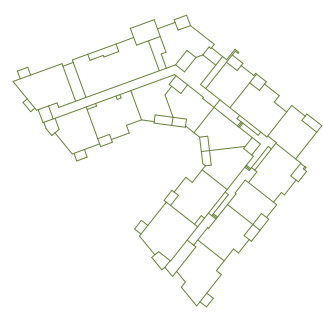


IN A CONTINUED EFFORT TO IMPROVE OUR HOMES, WE RESERVE THE RIGHT TO MODIFY PLANS, SPECIFICATIONS AND PRICES WITHOUT NOTICE. ROOM SIZES, SQUARE FOOTAGE, FEATURES AND OUTDOOR SPACES MAY VARY WITHIN THIS COMMUNITY. FLOOR PLANS MAY BE REVERSED BASED UPON LOCATION. ALL DIMENSIONS AND SIZES ARE APPROXIMATE. BUYERS ARE RECOMMENDED TO READ THE SALES DISCLOSURE STATEMENT AND REVIEW THE ARCHITECTURAL PLANS PRIOR TO PURCHASE. E.&O.E.

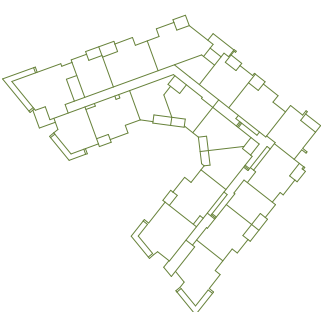




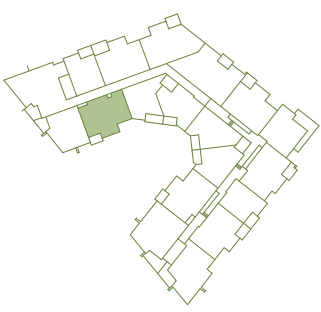
UNITS:  
514



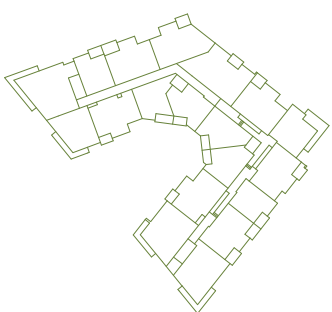
LEVEL 1



LEVEL 2

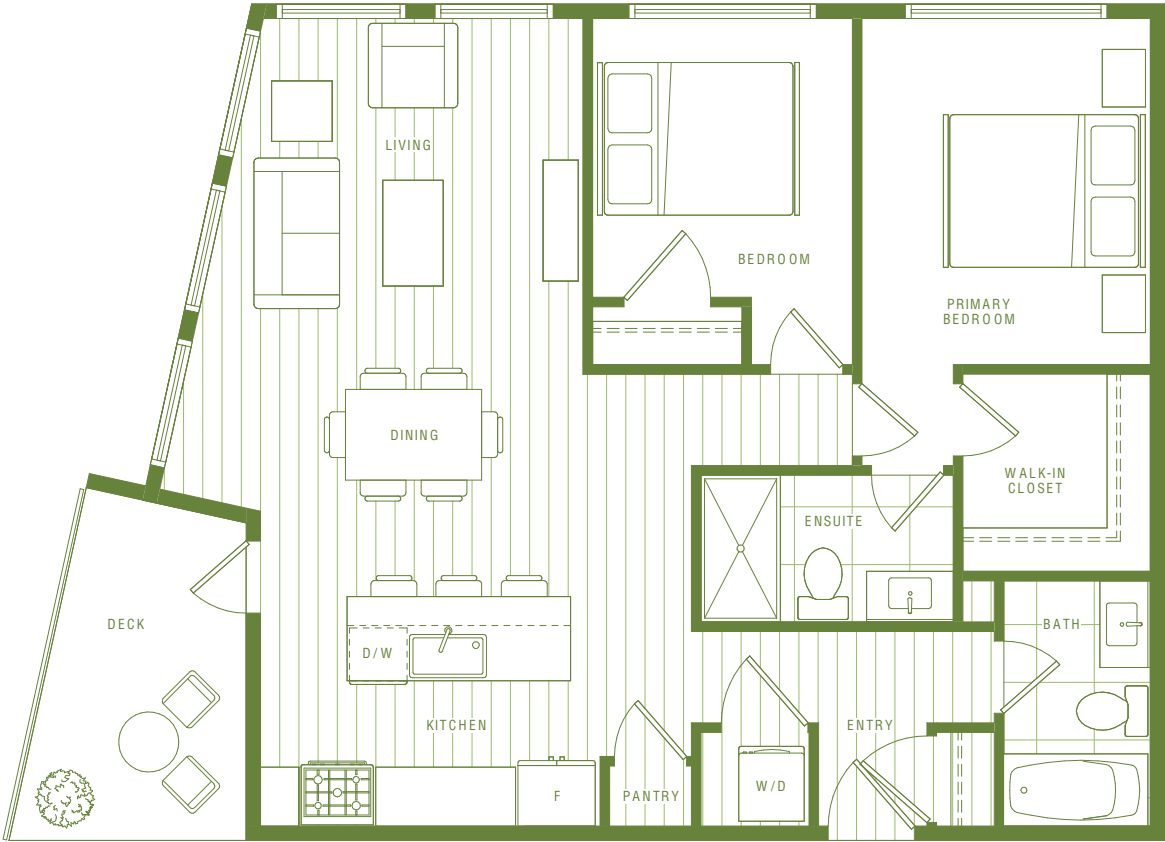


LEVEL 3 / 4 / 5

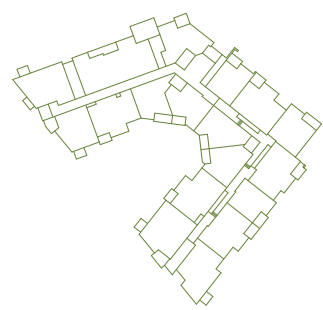


LEVEL 6

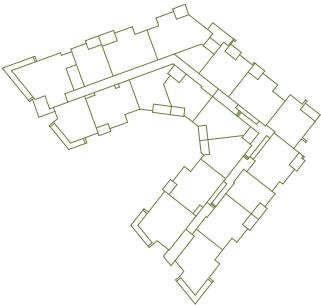




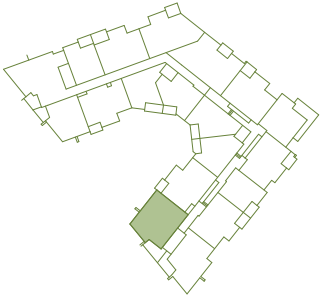
UNITS:  
308, 408, 508



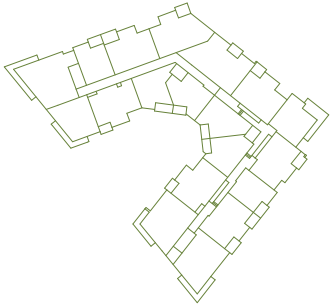
LEVEL 1



LEVEL 2

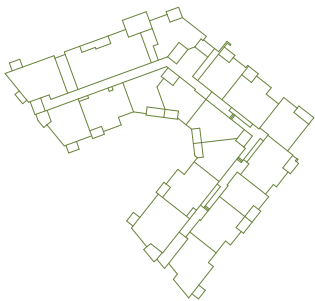
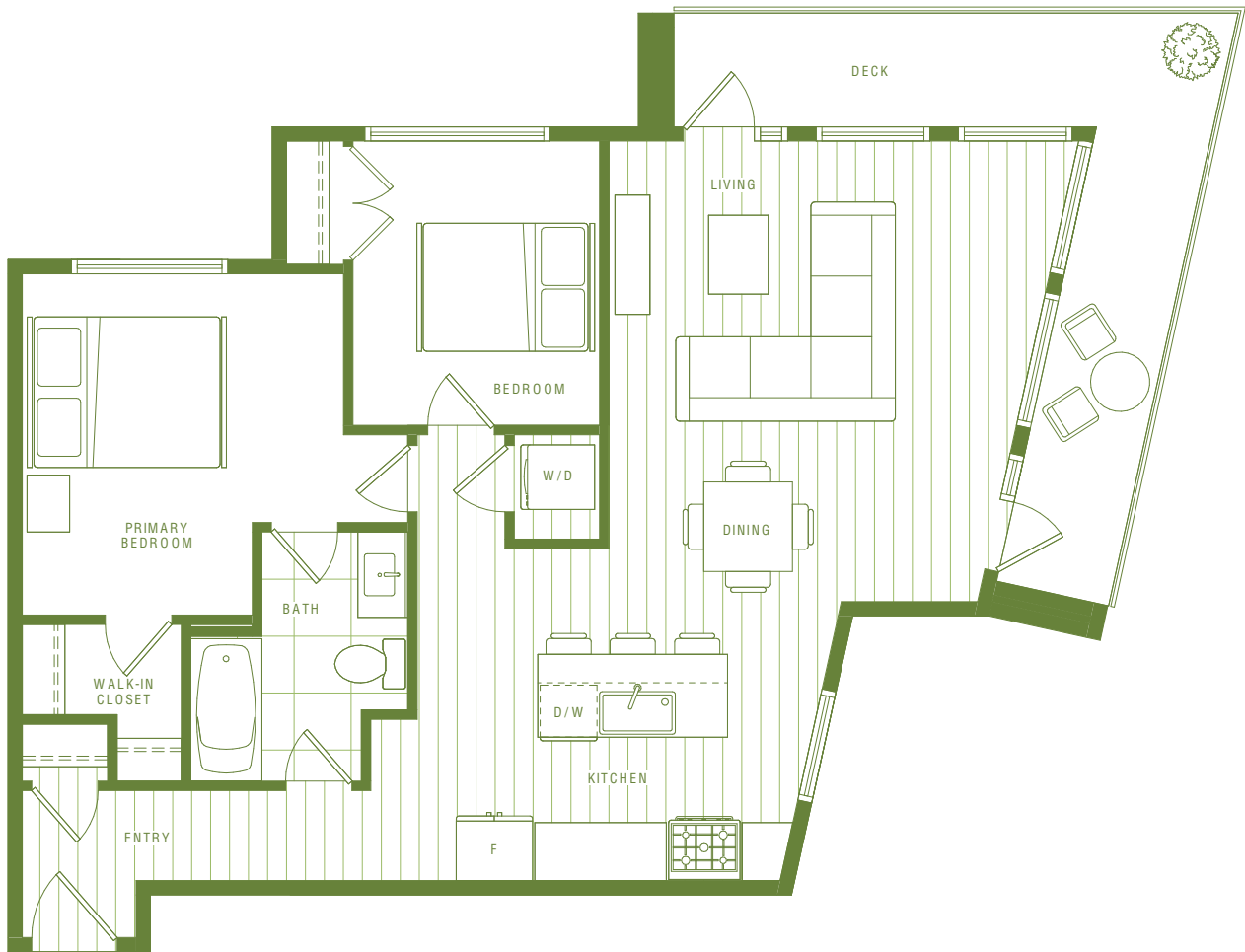


LEVEL 3 / 4 / 5

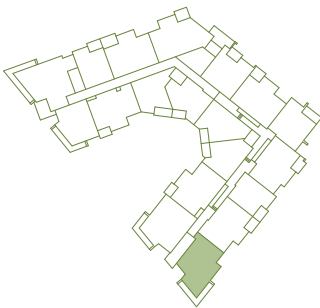


LEVEL 6

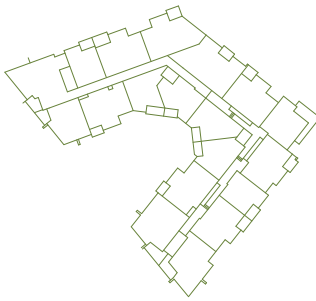




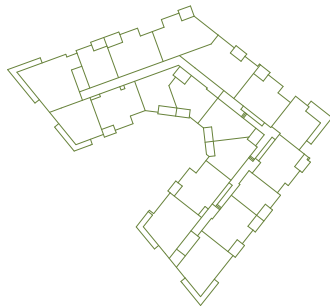
LEVEL 1



LEVEL 2

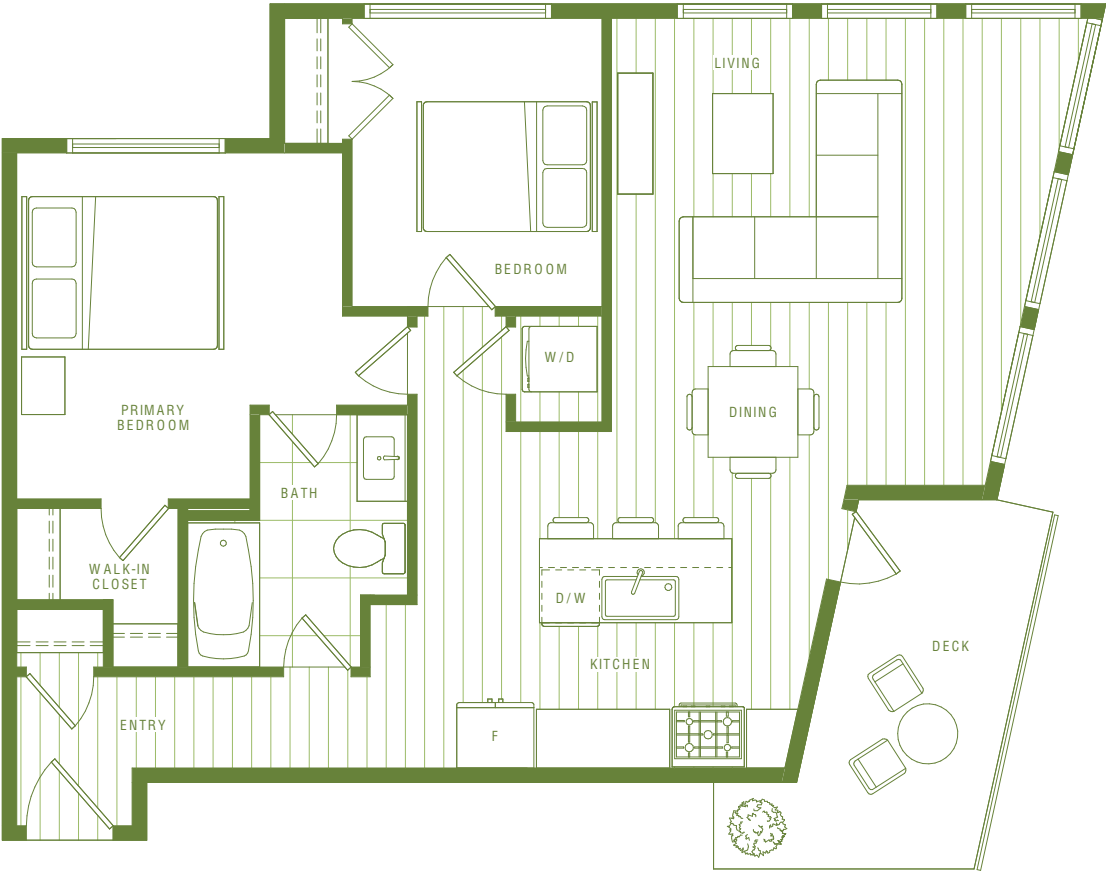


LEVEL 3 / 4 / 5

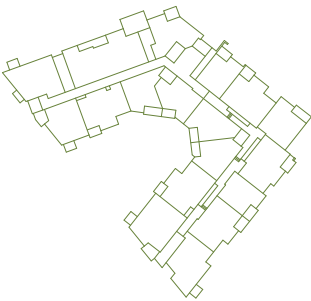


LEVEL 6

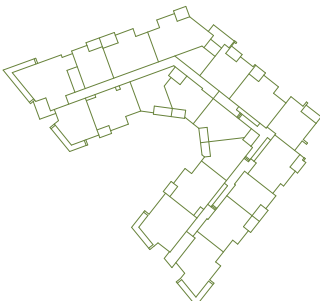




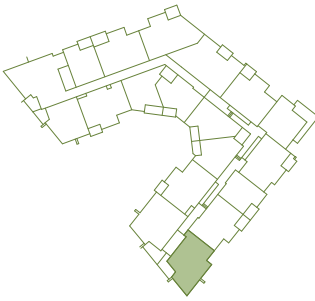
UNITS:  
307, 407, 507



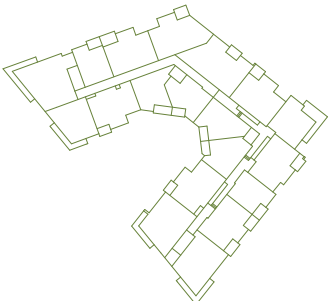
LEVEL 1



LEVEL 2



LEVEL 3 / 4 / 5

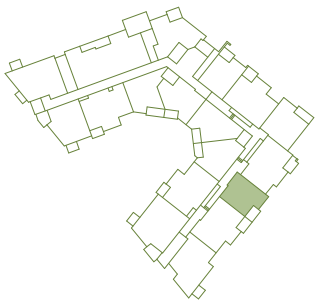


LEVEL 6

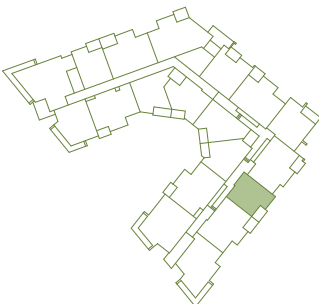




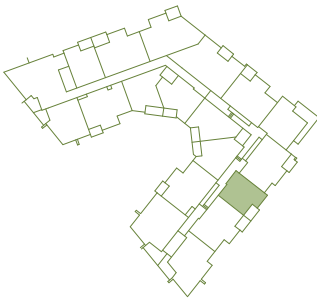
UNITS:  
105, 205, 305, 405,  
505, 605



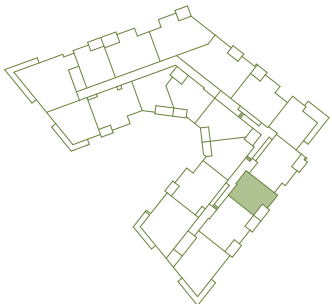
LEVEL 1



LEVEL 2

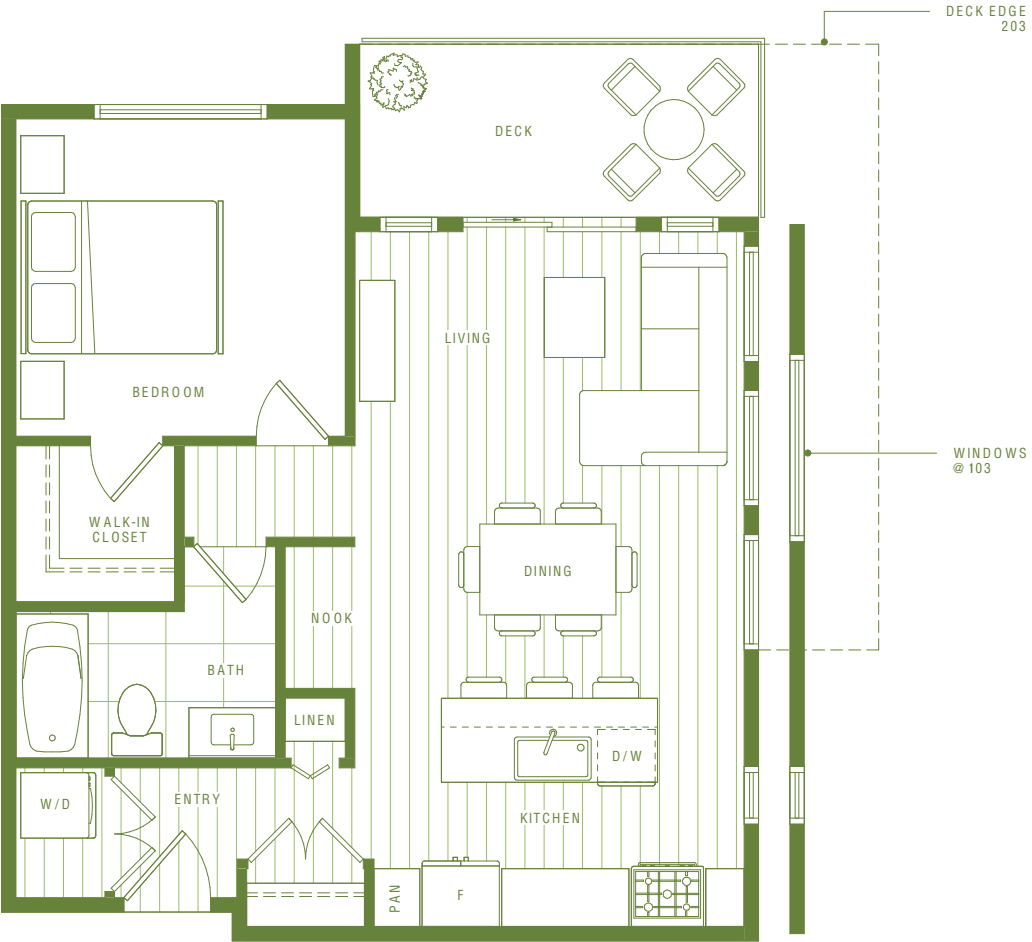


LEVEL 3 / 4 / 5

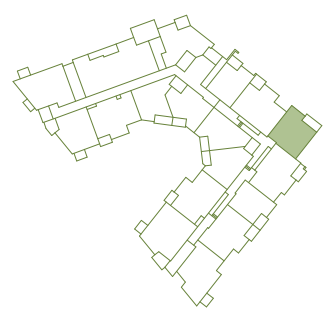


LEVEL 6

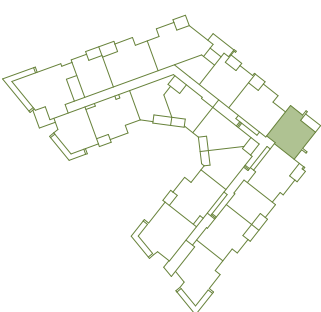




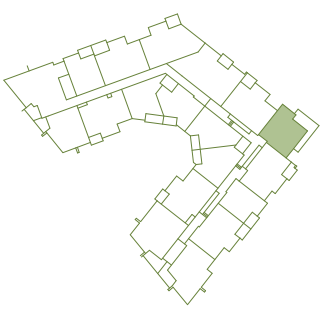
UNITS:  
103, 203, 303, 403,  
503



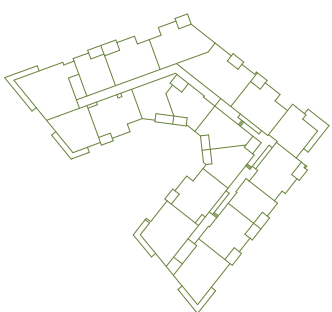
LEVEL 1



LEVEL 2

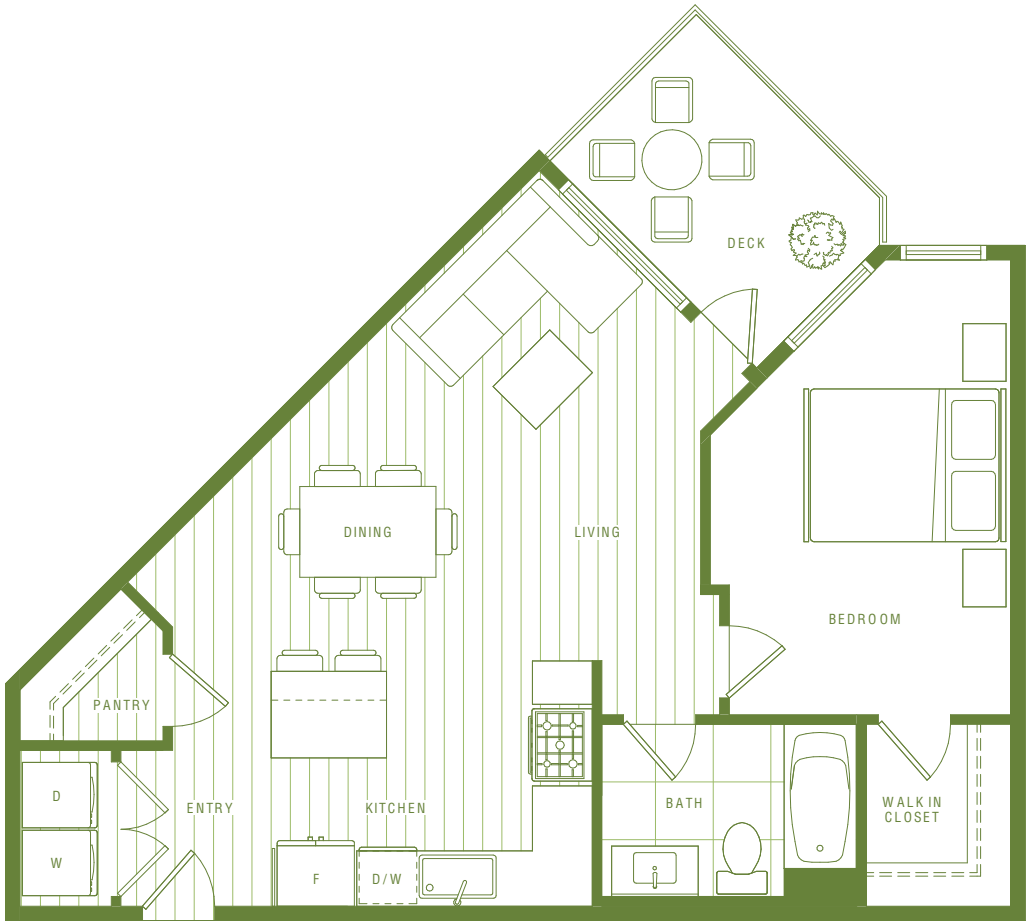


LEVEL 3 / 4 / 5

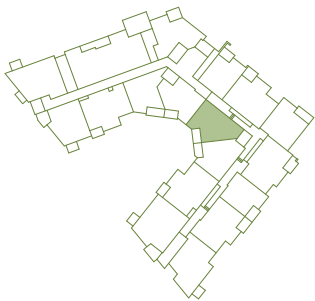


LEVEL 6

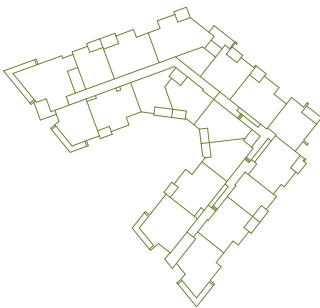




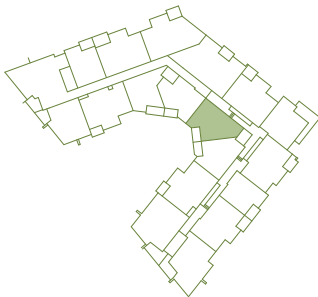
UNITS:  
111, 311



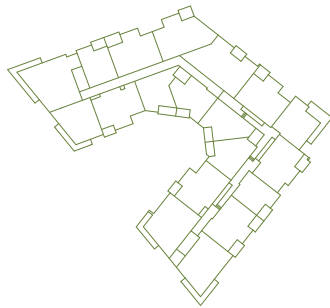
LEVEL 1



LEVEL 2



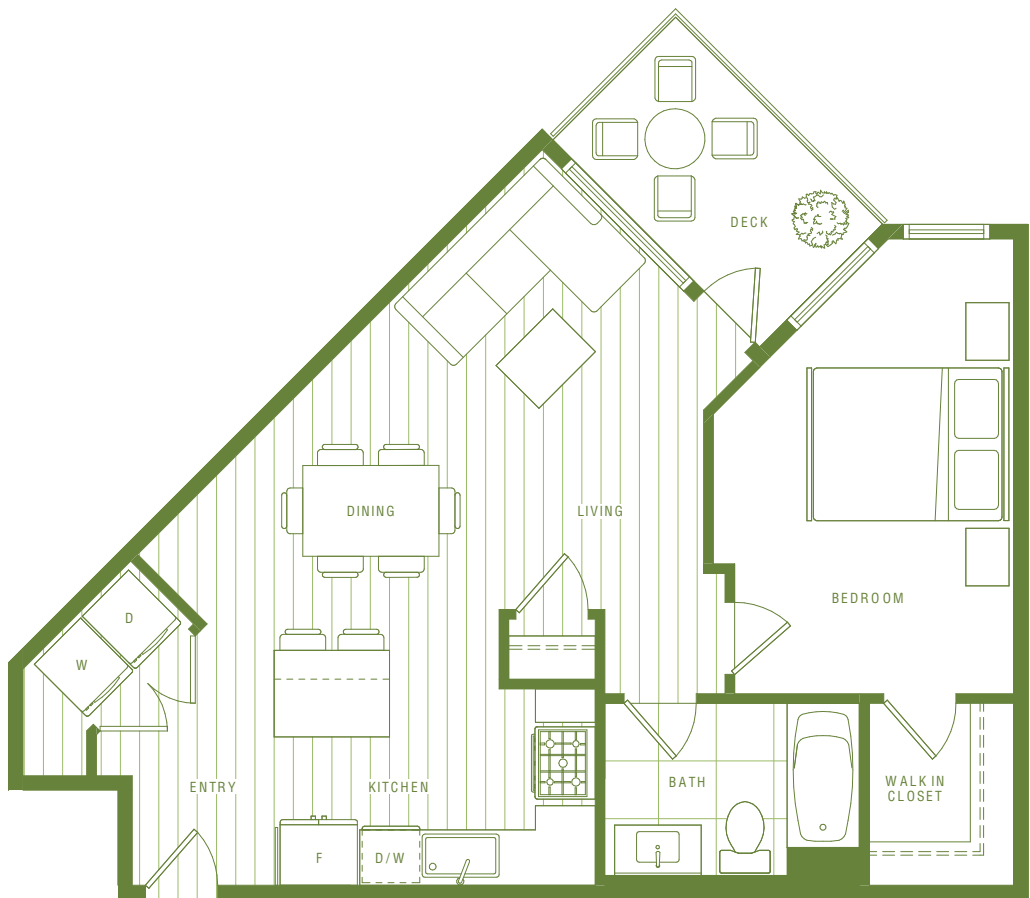
LEVEL 3 / 4 / 5



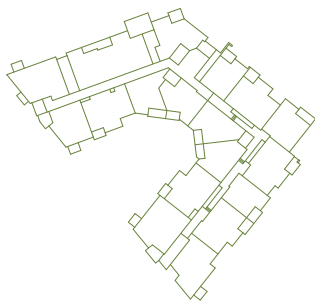
LEVEL 6



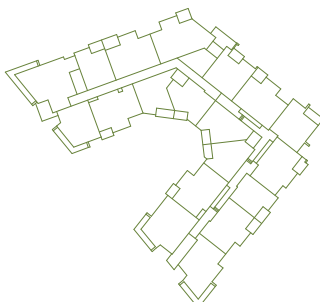




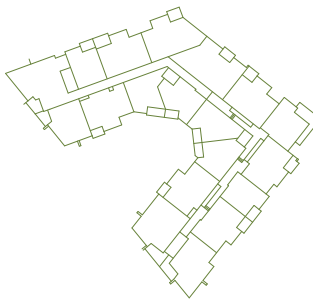
UNITS:  
611



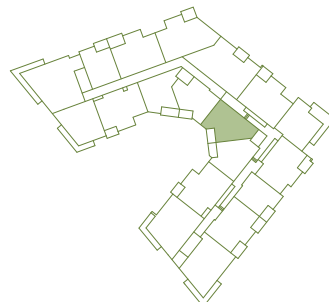
LEVEL 1



LEVEL 2

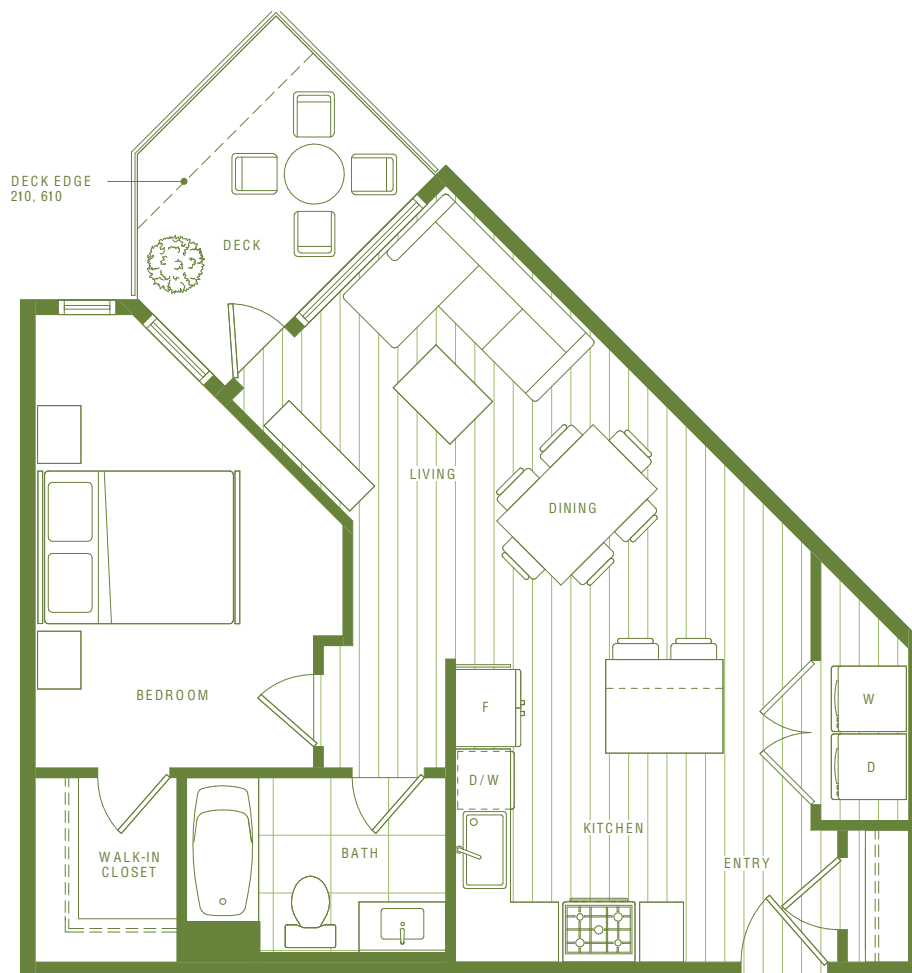


LEVEL 3 / 4 / 5

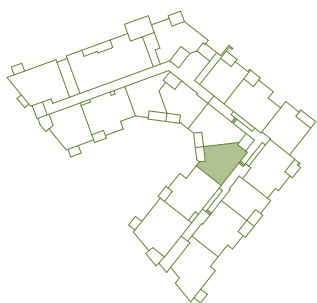


LEVEL 6

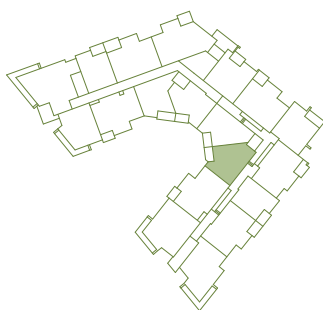




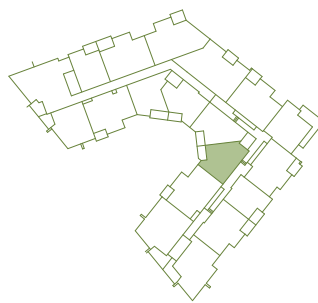
UNITS:  
110, 210, 310, 410, 510,  
610



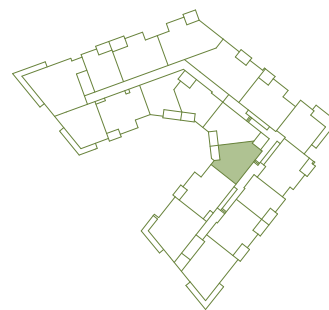
**LEVEL 1**



**LEVEL 2**



**LEVEL 3 / 4 / 5**



**LEVEL 6**

