

SOLANA
CONDOS - BUILDING B

A

URBAN 1 BEDROOM + 1 BATH

Interior: 425 sq. ft.

Exterior: 90 sq. ft.

Total: 515 sq. ft.

West Facing Courtyard:

Monthly Strata Fee: \$170.55

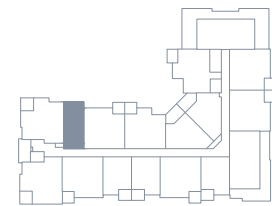
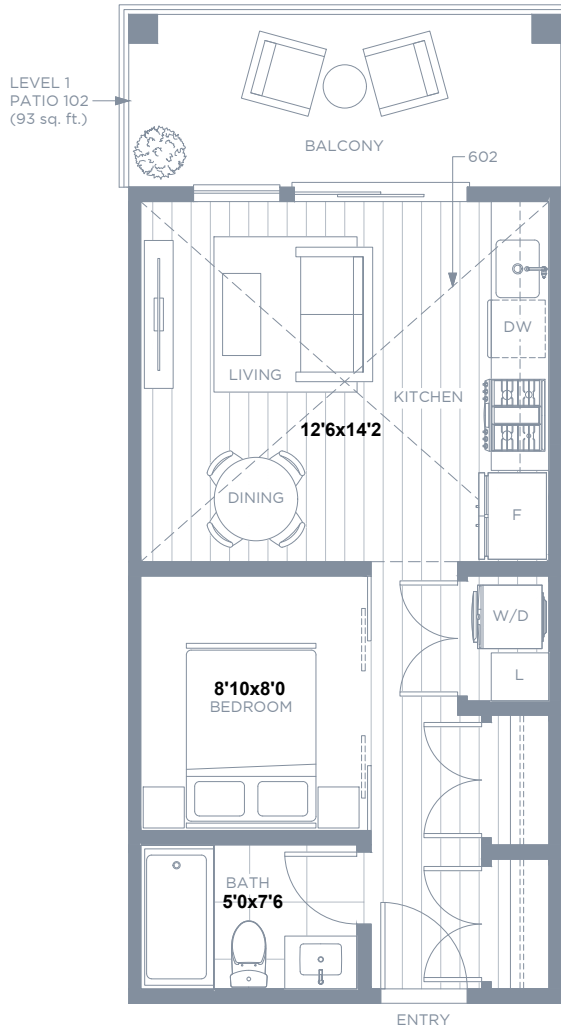
B102 \$384,990

B302 \$369,990

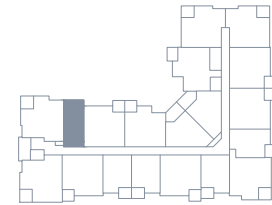
B402 \$374,990

B502 \$379,990

B602 \$389,990 with Raised Ceiling



LEVEL 6



LEVEL 2, 3, 4, 5



LEVEL 1



UNITS:

102, 202, 302, 402, 502, 602

SOLANA
CONDOS - BUILDING B

B 1 BEDROOM + 1 BATH
Interior: 550 sq. ft.
Exterior: 76 sq. ft.
Total: 626 sq. ft.

South Facing Hayer Courtyard
B516/B517 \$494,990 (Only Two)

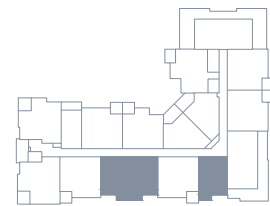
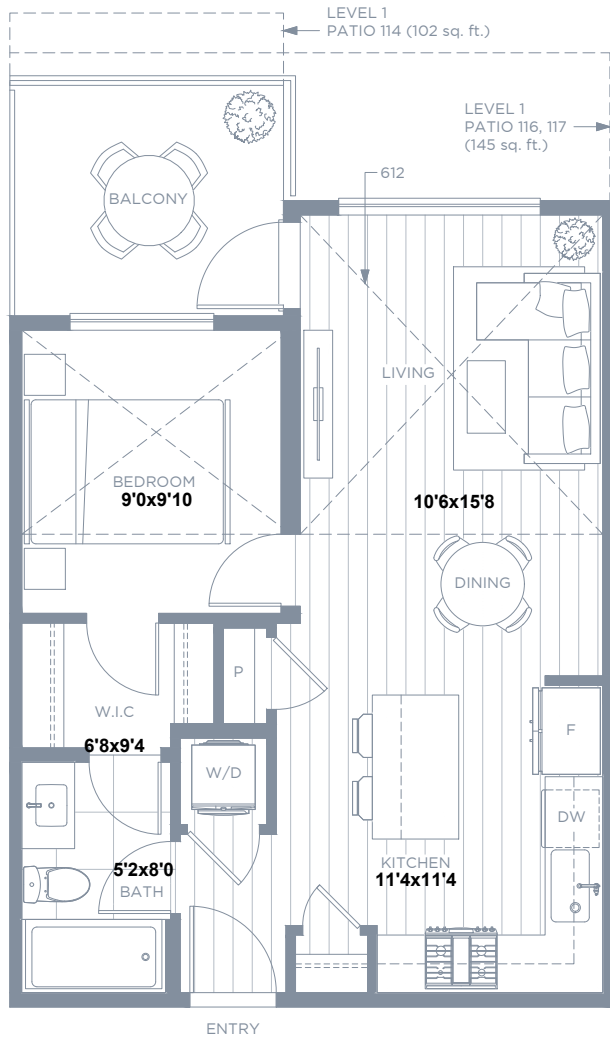
Monthly Strata Fee: \$217.45

South Facing Part of Hayer Building:

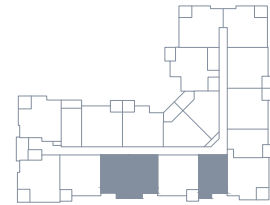
B314 \$474,990

B414 \$479,990

B514 \$484,990



LEVEL 6



LEVEL 2, 3, 4, 5



LEVEL 1



UNITS:

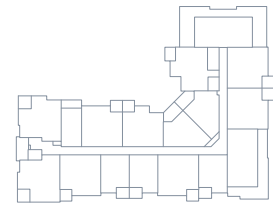
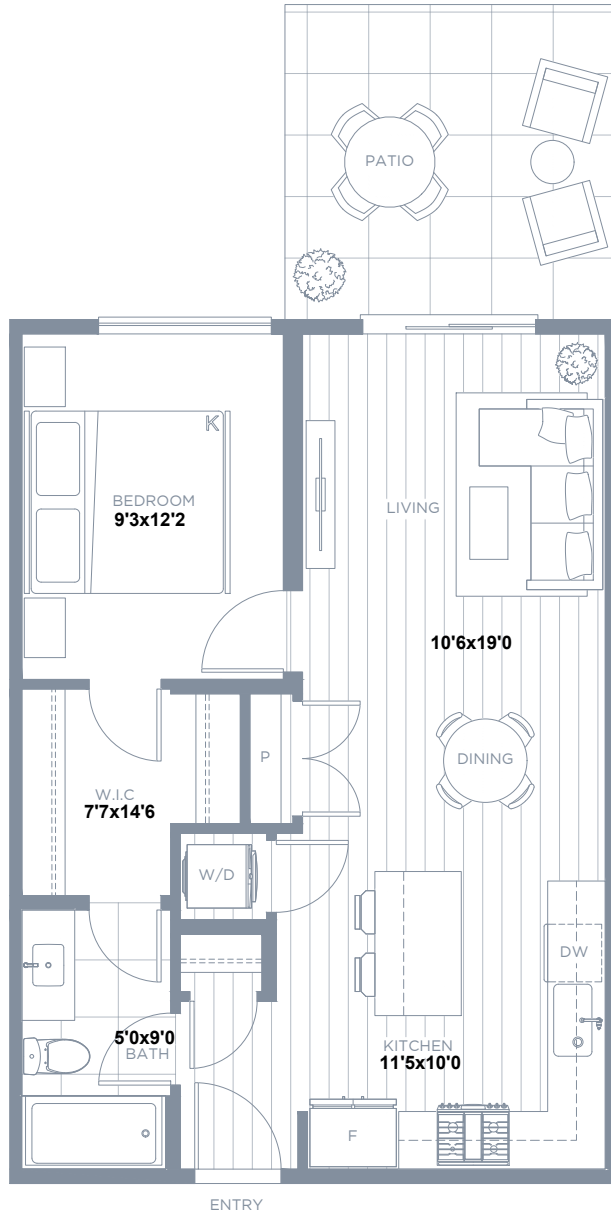
117, 217, 317, 417, 517, 615

MIRRORED UNITS:

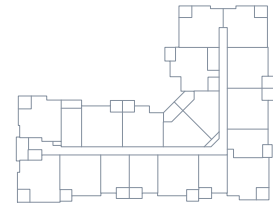
114, 116, 214, 216, 314, 316, 414, 416, 514, 516, 612, 614

East Facing w/Street Access:
B110/B111 \$514,990 with 54' of setback

Monthly Strata Fee: \$251.56



LEVEL 6



LEVEL 2, 3, 4, 5



LEVEL 1



UNITS:
110
MIRRORED UNITS:
111

SOLANA
CONDOS - BUILDING B

B4

1 BEDROOM + 1 BATH

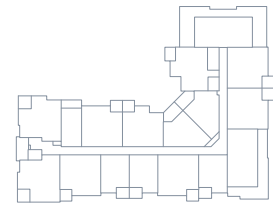
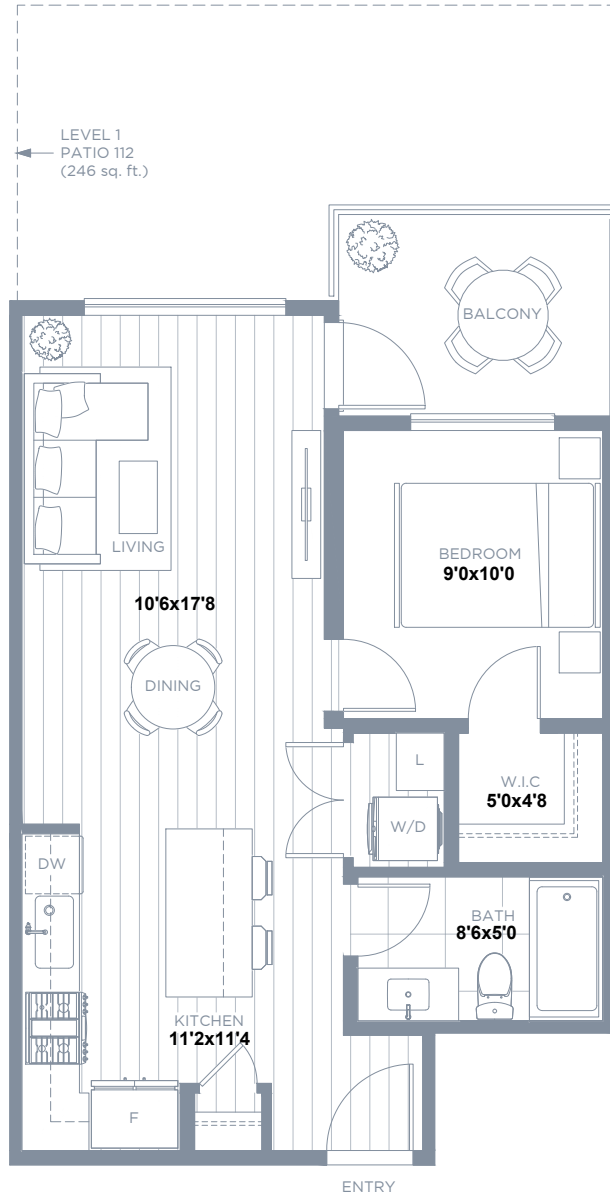
Interior: 563 sq. ft.

Exterior: 67 sq. ft.

Total: 630 sq. ft.

East Facing: with 54' of Setback
B112 \$494,990 with Direct Street Access
B212 \$474,990

Monthly Strata Fee: \$221.71



LEVEL 6



LEVEL 2, 3, 4, 5



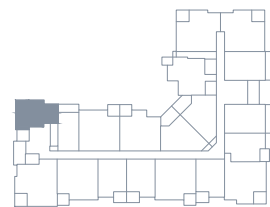
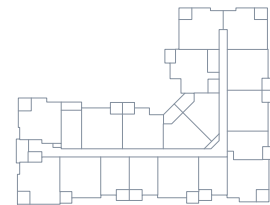
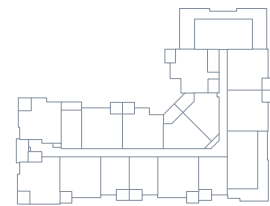
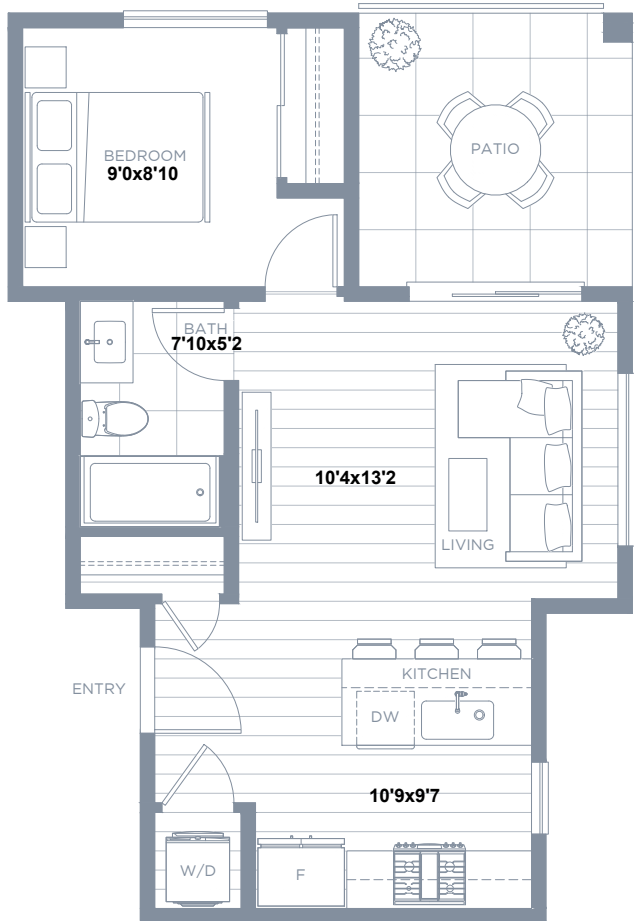
LEVEL 1



UNITS:
112, 212, 312, 412, 512

North West Facing Courtyard
B101 \$459,990 with street access
(Only One)

Monthly Strata Fee: \$196.13



UNITS:
101

SOLANA
CONDOS - BUILDING B



2 BEDROOM + 2 BATH
Interior: 861 sq. ft.
Exterior: 75 sq. ft.
Total: 936 sq. ft.

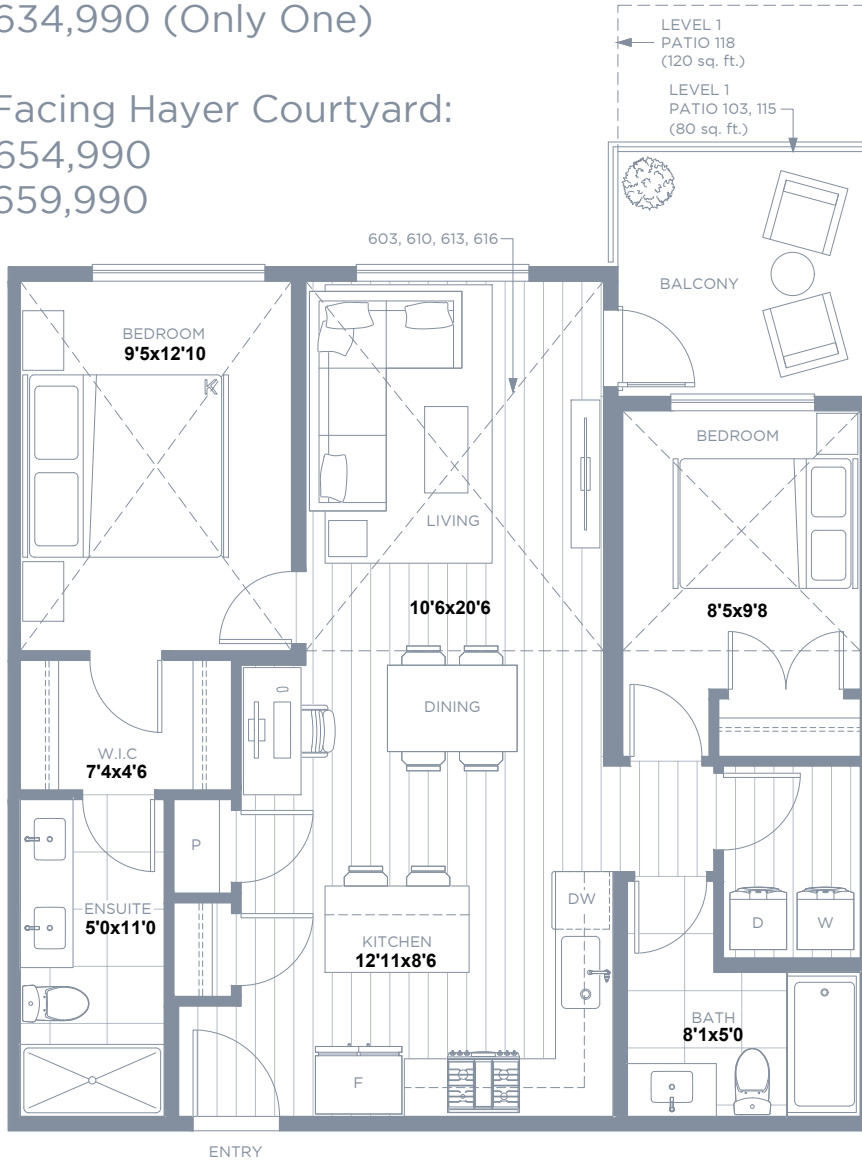
North Facing Courtyard:
B103 \$644,990 with street access
B203 \$639,990
B503 \$654,990

East Facing:
B210/211 \$634,990
B510/511 \$649,990

Monthly Strata Fee: \$341.10

South Facing Part of Hayer:
B515 \$634,990 (Only One)

South Facing Hayer Courtyard:
B418 \$654,990
B518 \$659,990



LEVEL 6



LEVEL 2, 3, 4, 5



LEVEL 1



UNITS:

103, 118, 203, 210, 218, 303, 310, 318, 403, 410, 418, 503, 510, 518, 603, 609, 616

MIRRORED UNITS:

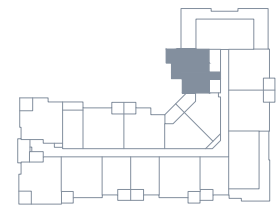
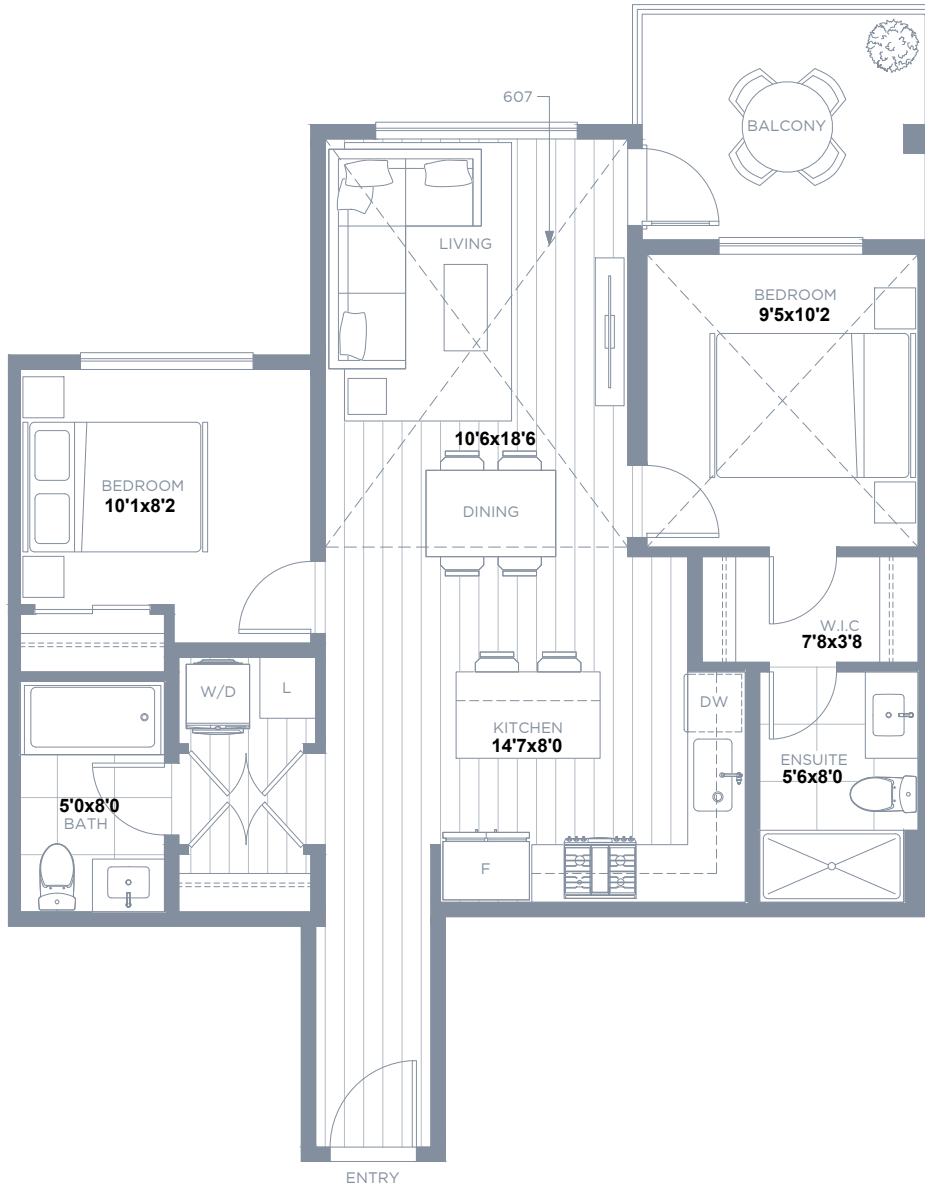
115, 211, 215, 311, 315, 411, 415, 511, 515, 610, 613

West Facing Courtyard Unobstructed View:

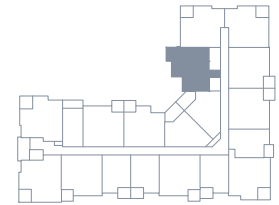
B207 \$619,990

B307 \$624,990

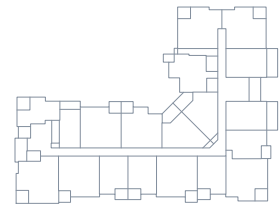
Monthly Strata Fee: \$319.78



LEVEL 6



LEVEL 2, 3, 4, 5



LEVEL 1



UNITS:

207, 307, 407, 507, 607

SOLANA
CONDOS - BUILDING B

C3

2 BEDROOM + 2 BATH

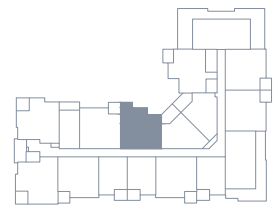
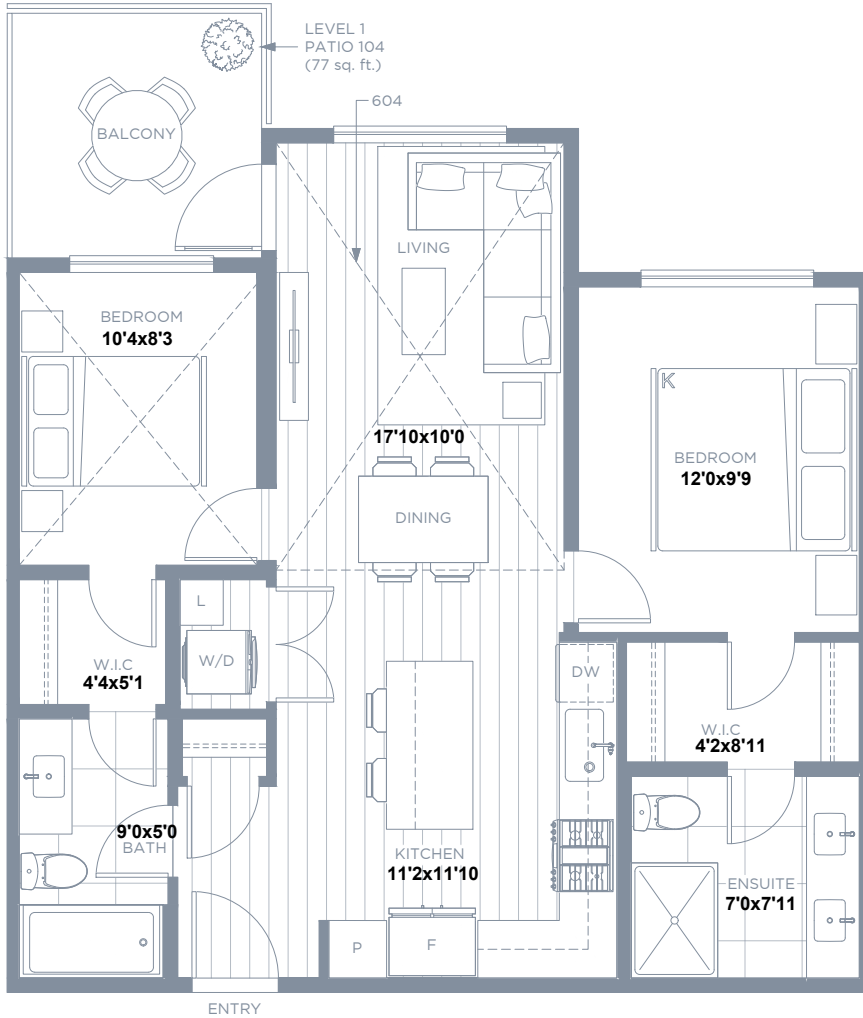
Interior: 809 sq. ft.

Exterior: 75 sq. ft.

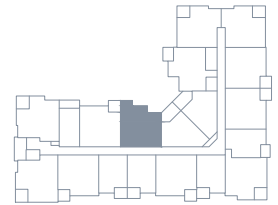
Total: 884 sq. ft.

North Facing Courtyard:
B104 \$634,990
B204 \$624,990
B604 \$649,990 with 12' Raised Ceiling

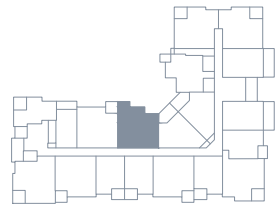
Monthly Strata Fee: \$319.78



LEVEL 6



LEVEL 2, 3, 4, 5



LEVEL 1



UNITS:
104, 204, 304, 404, 504, 604

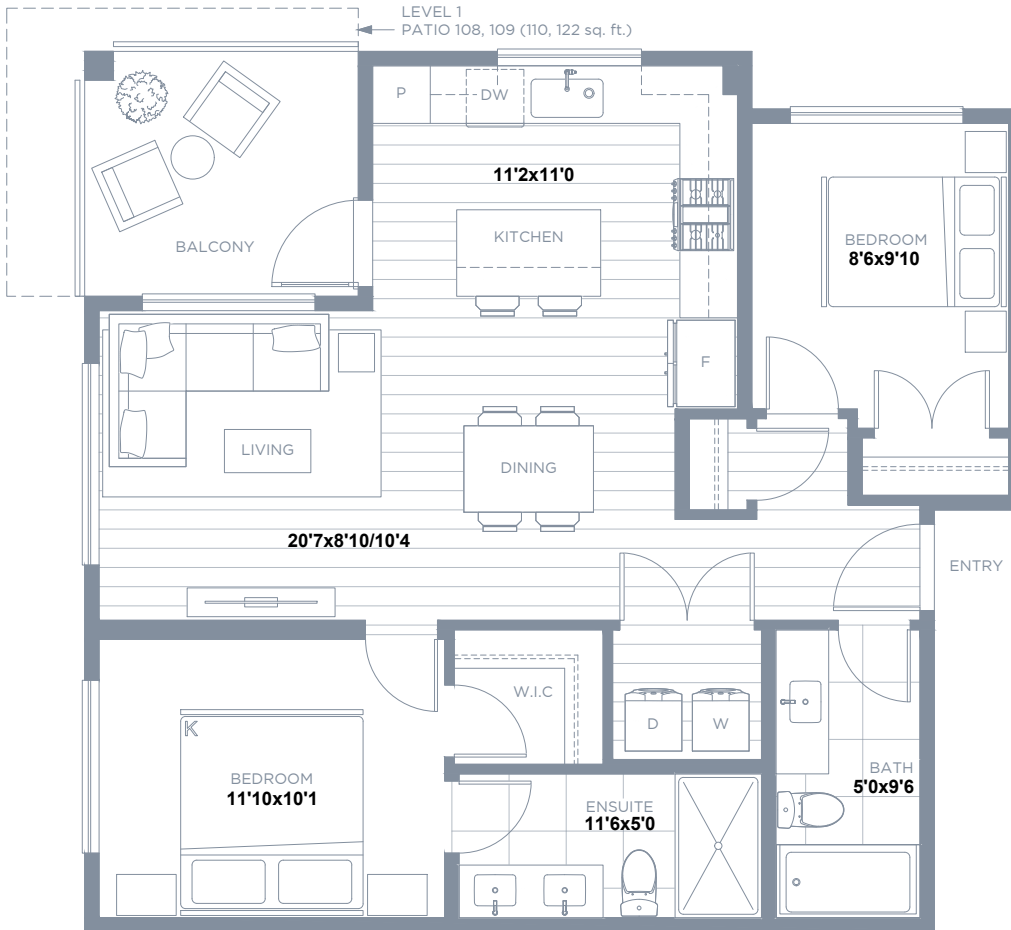
SOLANA
CONDOS - BUILDING B

D1 2 BEDROOM + 2 BATH
Interior: 848 sq. ft.
Exterior: 80 sq. ft.
Total: 928 sq. ft.

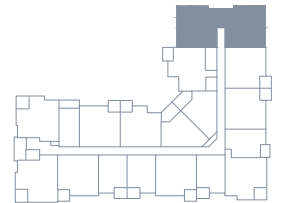
North West Facing Courtyard:
B408 \$664,990 (Only One)

Monthly Strata Fee: \$336.84

North East Facing:
B209 \$649,990
B509 \$664,990



LEVEL 6



LEVEL 2, 3, 4, 5



LEVEL 1



UNITS:
108, 208, 308, 408, 508

MIRRORED UNITS:
109, 209, 309, 409, 509

South West Facing Hayer Courtyard:
B319 \$729,990 (Only One)

Monthly Strata Fee: \$362.42



UNITS:
119, 219, 319, 419, 519, 617

SOLANA
CONDOS - BUILDING B

E2

3 BEDROOM + 2 BATH

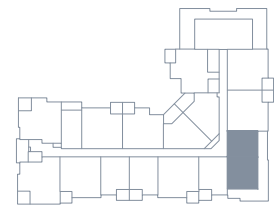
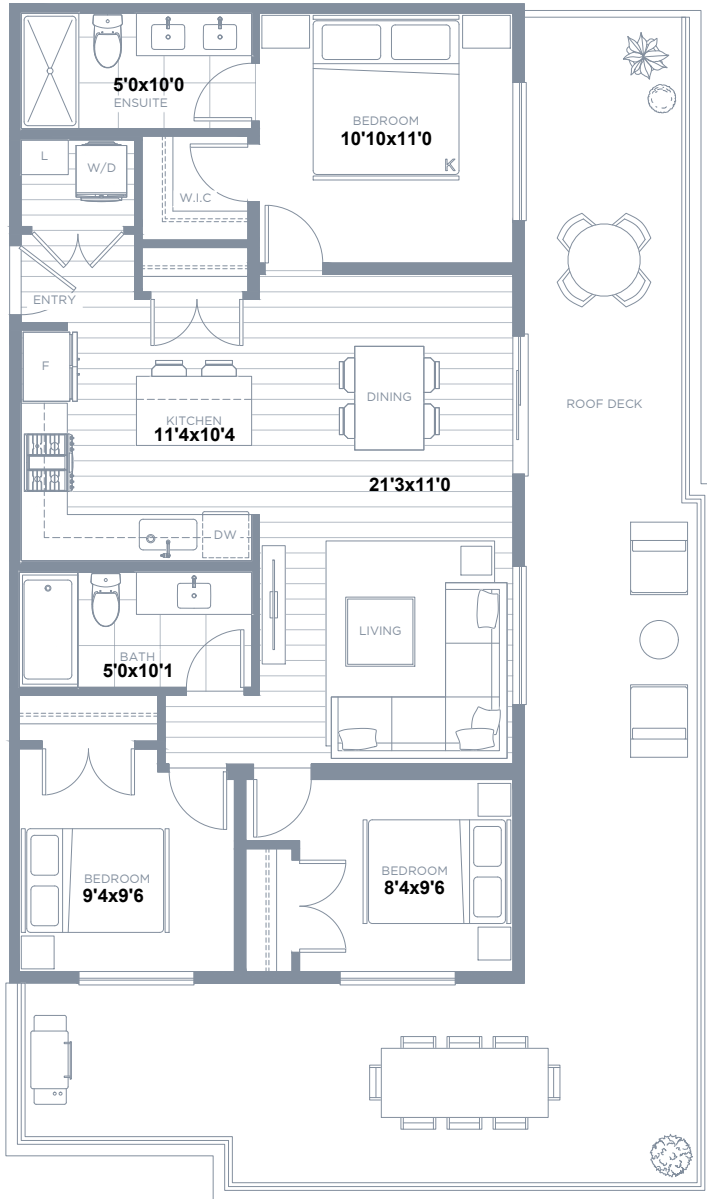
Interior: 949 sq. ft.

Exterior: 569 sq. ft.

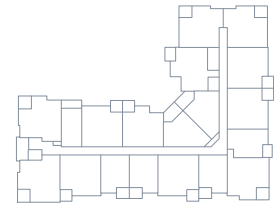
Total: 1,518 sq. ft.

South East Facing:
B611 \$899,990 (Only One)

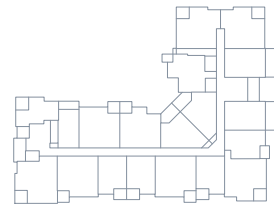
Monthly Strata Fee: \$375.21



LEVEL 6



LEVEL 2, 3, 4, 5



LEVEL 1



UNITS:
611